

25051  
**AIRPORT DIAGRAM**

AL-347 (FAA)

**RICHMOND INTL (RIC)**  
 RICHMOND, VIRGINIA

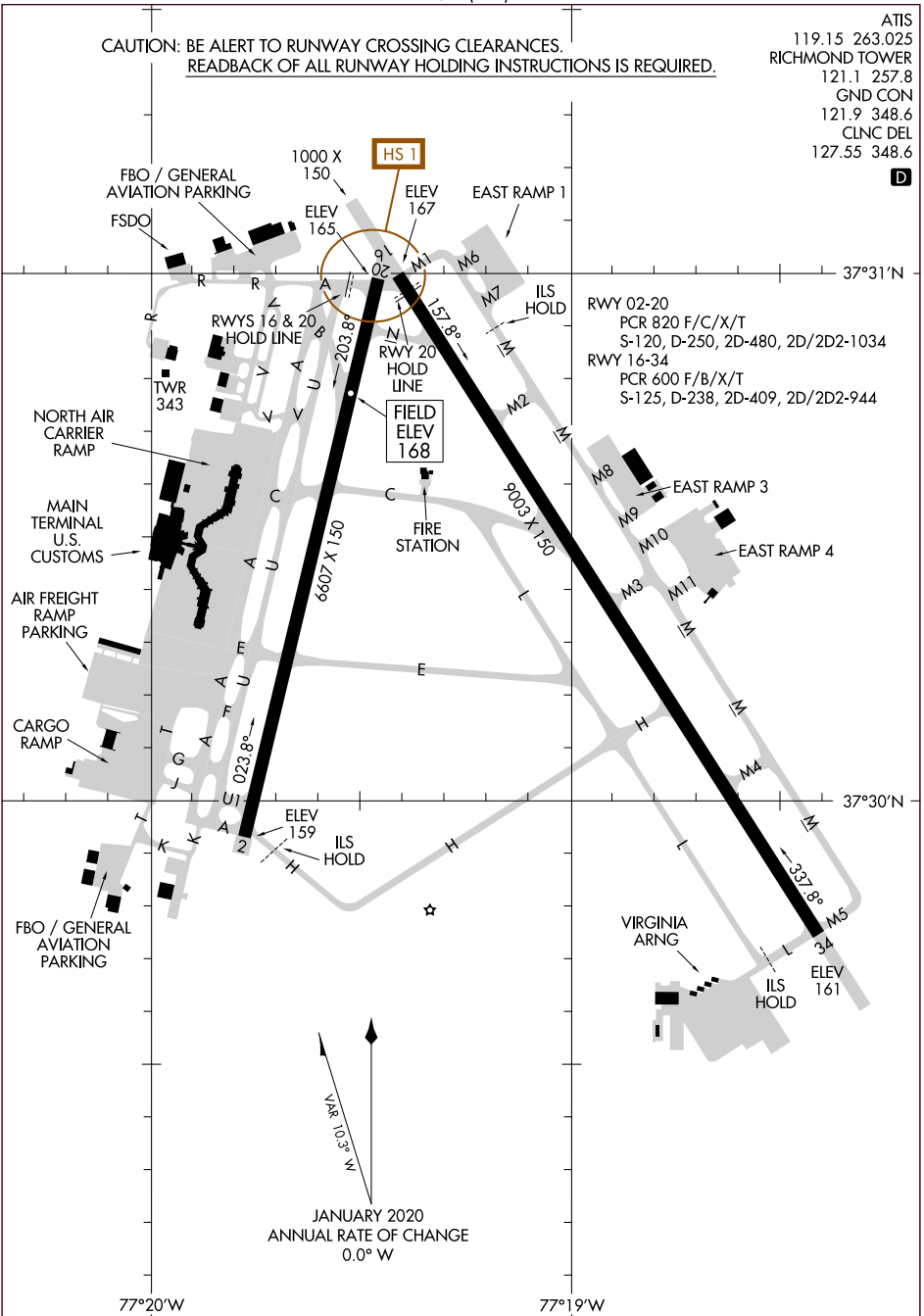
**CAUTION: BE ALERT TO RUNWAY CROSSING CLEARANCES.  
 READBACK OF ALL RUNWAY HOLDING INSTRUCTIONS IS REQUIRED.**

ATIS  
 119.15 263.025  
 RICHMOND TOWER  
 121.1 257.8  
 GND CON  
 121.9 348.6  
 CLNC DEL  
 127.55 348.6



NE-3, 20 FEB 2025 to 20 MAR 2025

NE-3, 20 FEB 2025 to 20 MAR 2025



RWY 02-20  
 PCR 820 F/C/X/T  
 S-120, D-250, 2D-480, 2D/2D2-1034  
 RWY 16-34  
 PCR 600 F/B/X/T  
 S-125, D-238, 2D-409, 2D/2D2-944

JANUARY 2020  
 ANNUAL RATE OF CHANGE  
 0.0° W

**AIRPORT DIAGRAM**  
 25051

RICHMOND, VIRGINIA  
**RICHMOND INTL (RIC)**